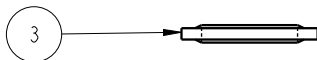
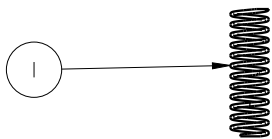
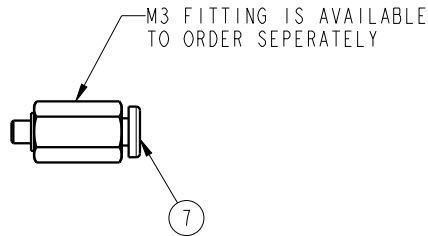
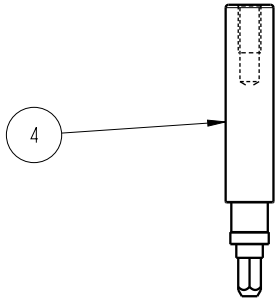
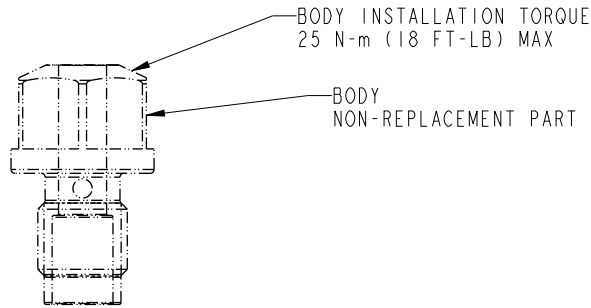


THIS IS A TWO PAGE PARTS LIST.  
 THIS FIRST PAGE APPLIES TO  
 MODELS 45-0459-01 & L5-0459-01 AT REVISION B AND LATER REVISIONS.



NO	QTY	PART NO	DESCRIPTION	REPAIR KIT
1	1	23350133	SPRING, COMPRESSION	X
2	1	39051091	O-RING, (7.5mm x 1.5)	X
3	1	39055021	SEAL, BONDED, M12	X
4	1	85040004	PISTON, SENSOR, POSITION, PNEU, OC	
7	N/A	P3037020	1/8 TUBE- M3 CONNECTOR	
N/A	N/A	62504001	KIT, REPAIR	NOTED
N/A	N/A	1S5003	INSTRUCTION SHEET	

**PARTS LIST**



VEKTEK, INC.  
 1334 E. SIXTH AVE. P.O. BOX 625  
 EMPORIA, KS. 66801 U.S.A.

C	5164	RELEASE	RLK	8/28/23
REV	IN ACCORDANCE WITH ECN	EFFECTIVE DATE	REVISED BY	DATE
DRW BY: MAJ	<b>DRAWING STATUS: Released</b>			
DATE: 11/11/16	PRODUCTION APPROVED FOR RELEASED STATUS ONLY			

ASSEMBLIES AFFECTED  
 45049501  
 L5049501

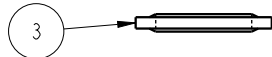
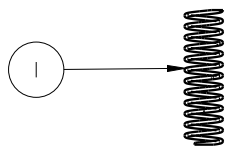
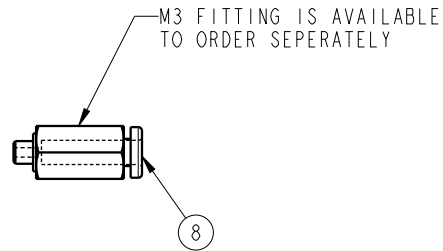
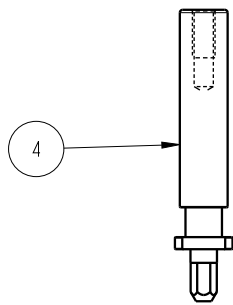
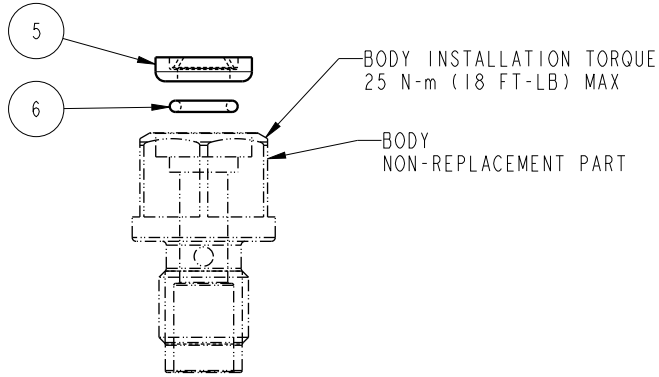
PARTS LIST, ASSY, SENSOR, POSITION, PNEU, OC

SIZE A **MPL6906**

REV C

SHEET 1 OF 2

THIS IS A TWO PAGE PARTS LIST.  
 THIS SECOND PAGE APPLIES TO  
 MODELS 45-0459-01 & L5-0459-01 AT REVISION A.



NO	QTY	PART NO	DESCRIPTION	REPAIR KIT
1	1	23350133	SPRING, COMPRESSION	X
2	1	39051091	O-RING, (7.5mm x 1.5)	X
3	1	39055021	SEAL, BONDED, M12	X
4	1	85040004	PISTON, SENSOR, POSITION, PNEU, OC	
5	1	39V10029	WIPER, PRESS-IN, (1/4)	X
6	1	39V51001	O-RING, (6mm x 1.5)	X
8	N/A	P3037020	1/8 TUBE - M3 CONNECTOR	
N/A	N/A	62504001	KIT, REPAIR	NOTED
N/A	N/A	ISS003	INSTRUCTION SHEET	

**PARTS LIST**



VEKTEK, INC.  
 1334 E. SIXTH AVE. P.O. BOX 625  
 EMPORIA, KS. 66801 U.S.A.

ASSEMBLIES AFFECTED  
 45049501  
 L5049501

PARTS LIST, ASSY, SENSOR, POSITION, PNEU, CART, OC

SIZE  
 A MPL6906

REV  
 C

C	5164	RELEASE	RLK	8/28/23
REV	IN ACCORDANCE WITH ECN	EFFECTIVE DATE	REVISED BY	DATE
DRW BY:	MAJ	<b>DRAWING STATUS: Released</b>		
DATE:	11/11/16	PRODUCTION APPROVED FOR RELEASED STATUS ONLY		